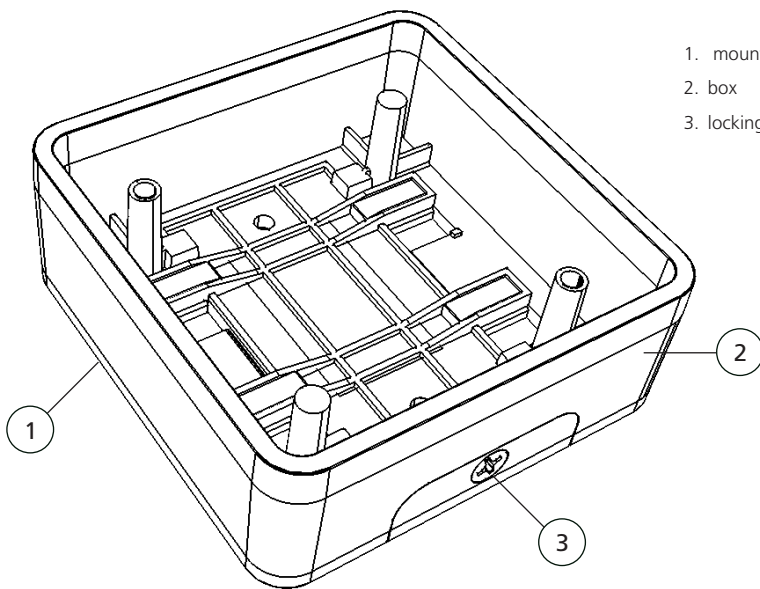


# MOUNTING BOX EBA

4.75" Square, Surface-Mount Box  
with Easy Battery Access



1. mounting plate
2. box
3. locking screw (Phillips head)



## TECHNICAL SPECIFICATIONS

<b>Dimensions</b>	5 $\frac{3}{8}$ " (L) x 5 $\frac{3}{8}$ " (W) x 2" (T)
<b>Material</b>	box: ABS plastic locking screw: stainless steel

*Specifications are subject to change without prior notice.  
All values measured in specific conditions.*

## COMPATIBLE PRODUCTS

The following 4.75" square push plates and accessory are compatible with the Mounting Box EBA:

- 10PBS - PUSH TO OPEN text only
- 10PBS1 - PUSH TO OPEN text and accessibility logo
- 10PBSLL - accessibility logo only
- 10PBS10 - plain
- 10PBSE - PUSH TO EXIT text only
- 10PBS1B - PUSH TO OPEN text and accessibility logo, blue
- 10PBS1SB - PUSH TO OPEN text and accessibility logo, satin brass
- 10PBS1BB - PUSH TO OPEN text and accessibility logo, bright brass
- 10WRSQ475 - weather ring

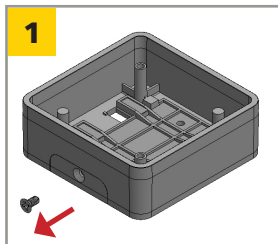
## PRECAUTIONS



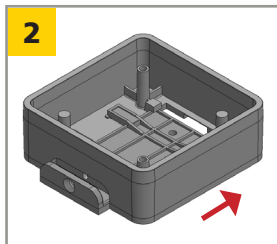
### CAUTION

- ❑ Shut off all power going to header before attempting any wiring procedures.
- ❑ Maintain a clean and safe environment when working in public areas.
- ❑ Constantly be aware of pedestrian traffic around the door area.
- ❑ Always stop pedestrian traffic through the doorway when performing tests that may result in unexpected reactions by the door.
- ❑ **ESD (electrostatic discharge):** Circuit boards are vulnerable to damage by electrostatic discharge. Before handling any board, ensure you dissipate your body's ESD charge.
- ❑ Always check placement of all wiring before powering up to ensure that moving door parts will not catch any wires and cause damage to equipment.
- ❑ Ensure compliance with all applicable safety standards (i.e. ANSI A156.10) upon completion of installation.
- ❑ **DO NOT** attempt any internal repair of the components. All repairs and/or component replacements must be performed by BEA, Inc. Unauthorized disassembly or repair:
  1. May jeopardize personal safety and may expose one to the risk of electrical shock.
  2. May adversely affect the safe and reliable performance of the product resulting in a voided warranty.

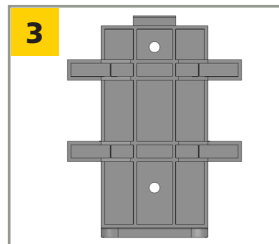
## INSTALLATION



Remove locking screw.



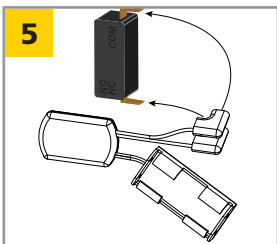
Slide box off of mounting plate.



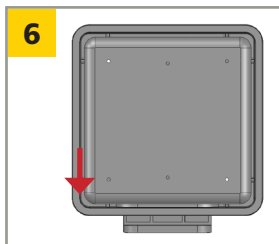
Mount mounting plate to wall or other flat surface.



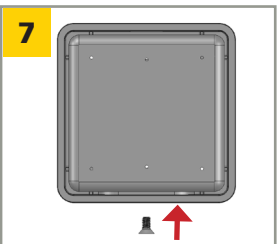
Install push plate to box.



Connect wireless transmitter to push plate NO and COM.

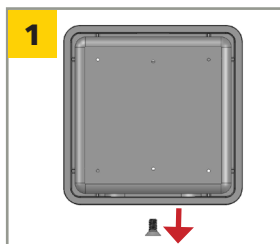


Slide box onto mounting plate.

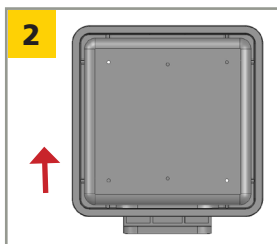


Reinstall locking screw.

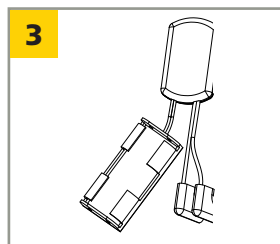
## BATTERY REPLACEMENT



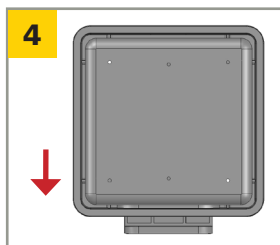
Remove locking screw.



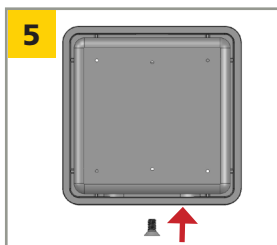
Slide box off of mounting plate.



Replace wireless transmitter batteries.<sup>1</sup>



Slide box onto mounting plate.



Reinstall locking screw.

## BEA, INC. INSTALLATION/SERVICE COMPLIANCE EXPECTATIONS

BEA, Inc., the sensor manufacturer, cannot be held responsible for incorrect installations or incorrect adjustments of the sensor/device; therefore, BEA, Inc. does not guarantee any use of the sensor/device outside of its intended purpose.

BEA, Inc. strongly recommends that installation and service technicians be AAADM-certified for pedestrian doors, IDA-certified for doors/gates, and factory-trained for the type of door/gate system.

Installers and service personnel are responsible for executing a risk assessment following each installation/service performed, ensuring that the sensor/device system performance is compliant with local, national, and international regulations, codes, and standards.

Once installation or service work is complete, a safety inspection of the door/gate shall be performed per the door/gate manufacturer's recommendations and/or per AAADM/ANSI/DASMA guidelines (where applicable) for best industry practices. Safety inspections must be performed during each service call – examples of these safety inspections can be found on an AAADM safety information label (e.g. ANSI/DASMA 102, ANSI/DASMA 107, UL294, UL325, and International Building Code).

Verify that all appropriate industry signage, warning labels, and placards are in place.



A Halma company