



APPLICATION NOTE

LZR®-FLATSCAN SW GLASS DOOR ACCESSORY

This Application Note applies to the following BEA Products: LZR®-FLATSCAN SW

This procedure is intended for glass-door applications and, therefore, requires adhesion rather than drilling, and special routing of the cable.

Accessory components:



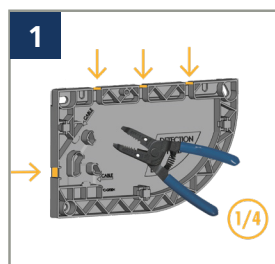
Flat primary-secondary cable



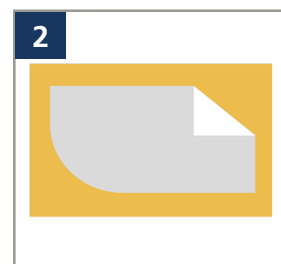
Stickers



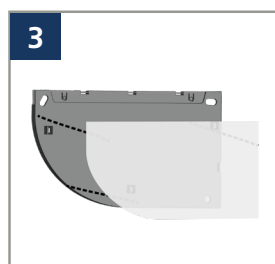
Cable covers



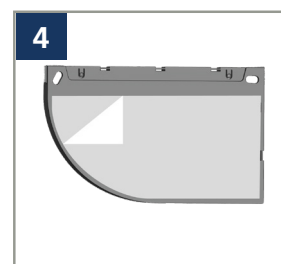
Remove one cable pass-thru notch.



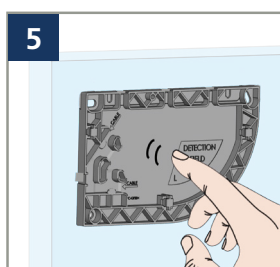
Remove the sticker from the sticker backing sheet.



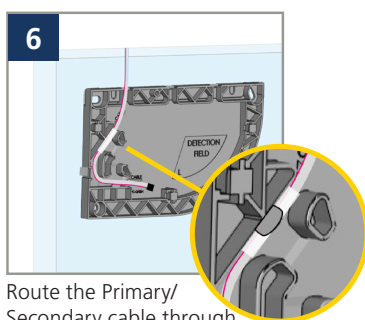
Adhere the sticker to the back of the mounting base, aligning the two shapes.



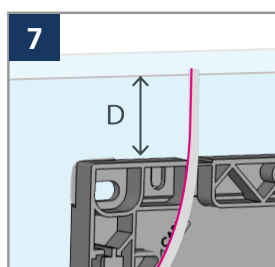
Remove the sticker liner from the sticker.



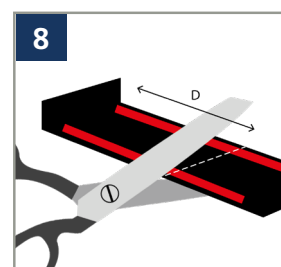
Align the mounting base, and then press the base to the glass to adhere.



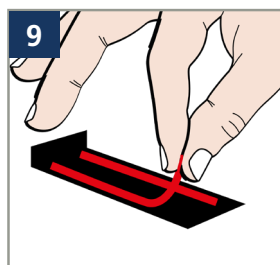
Route the Primary/Secondary cable through the pass-thru notch.



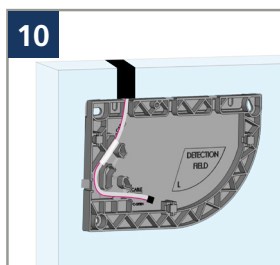
Measure the distance from the edge of the door to the edge of the mounting base (D).



Cut the cable cover to match the measurement (D).



Remove the adhesive backing.



Place the cable cover over the cable and door, as shown.

