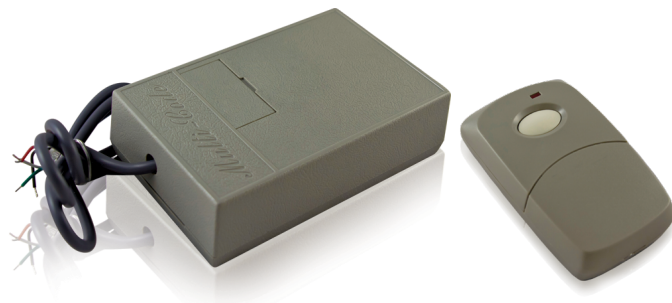




# 300 MHZ FAMILY

300 MHZ WIRELESS TRANSMITTERS  
AND RECEIVERS



## LEARN MORE



click or scan

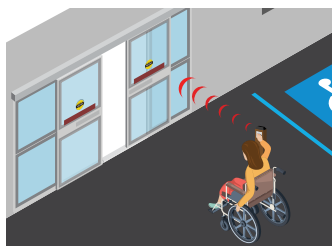
## TECHNOLOGY



## CERTIFICATIONS



## APPLICATIONS



Wireless Actuators



Limited Mobility

## TECHNICAL SPECIFICATIONS

<b>Frequency</b>	300 MHz
<b>Radio Control Type</b>	Analog
<b>Input Voltage</b>	24 VAC / VDC
<b>Operating Temperature</b>	14 – 131 °F (-10 – 55 °C)
<b>Setup</b>	10 dip switch access code programming
<b>Power</b>	
10T300HHX	(1) 9-volt battery
10T300KEYCHAIN	(1) 12-volt battery
10T300MINIPB	(1) 12-volt battery
10T300PB	(1) 9-volt battery
<b>Receiver Dimensions</b>	
Without Flange	4 9/10" (L) x 3 1/5" (W) x 1 3/5" (H)
With Flange	5 2/5" (L) x 3 1/5" (W) x 1 2/5" (H)
<b>Norm Conformity</b>	CE, FCC, IC

## PRODUCT SERIES



**10R300**  
300 MHz Analog  
receiver



**10T300HH**  
1-Button handheld  
transmitter



**10T300HHDBL**  
2-Button handheld  
transmitter



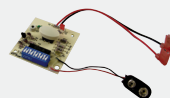
**10T300HH4**  
4-Button handheld  
transmitter



**10T300KEYCHAIN**  
1-Button keychain  
transmitter



**10T300MINIPB**  
1-Button miniature  
wired transmitter



**10T300PB**  
Wired transmitter  
no case

**DISCLAIMER** Information is supplied upon the condition that the persons receiving it will make their own determination as to its suitability for their purposes prior to use. In no event will BEA be responsible for damages of any nature whatsoever resulting from the use of or reliance upon information from this document or the products to which the information refers. BEA has the right without liability to change descriptions and specifications at any time.

WWW.BEASENSORS.COM



www.gateopenersafety.com | 1(800)-878-7829 | sales@gateopenersafety.com

A Halma company