

APPLICATION NOTE

APP NOTE

BEA Products to which this Application Note applies: P/N:
10MAGLOCK1, 10MAGLOCK3, 10MAGLOCK5, 10MAGLOCK6:
10MAGLOCK1UL, 10MAGLOCK3UL, 10MAGLOCK5UL, 10MAGLOCK6UL

BEA Inc. is discontinuing P/N: 10MAGLOCK1, 10MAGLOCK3, 10MAGLOCK5, 10MAGLOCK6 and will be substituting P/N: 10 MAGLOCK1UL, 10MAGLOCK3UL, 10MAGLOCK5UL, 10MAGLOCK6UL

There are some slight differences between the NON UL maglocks and the UL listed maglocks shown below.

- Supply voltage must be via UL listed power supply. Using a transformer and rectifier combination will not work. This is due to the voltage requirement and design of the maglock with respect to its UL listing. The maglock requires a smoother VDC signal than what a transformer rectifier combination can supply.
- Mounting is the same. No additional drilling or mounting blocks or spacers are required.
- The maglock 5-pin terminal is oriented 90 degrees different but wires the same.
- The voltage jumpers are different. Ensure to check your jumpers settings prior to powering.

ALL MAGLOCKS JUMPER SETTINGS ARE DEFAULTED TO 24VDC

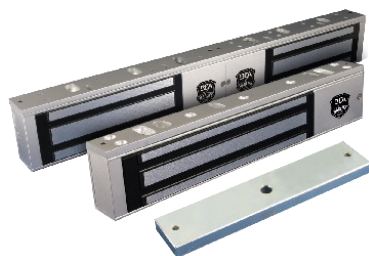
12VDC jumper settings	Default 24VDC jumper settings
10MAGLOCK1	10MAGLOCK1
10MAGLOCK3	10MAGLOCK3
10MAGLOCK5	10MAGLOCK5
10MAGLOCK6	10MAGLOCK6
10MAGLOCK3UL	10MAGLOCK3UL
10MAGLOCK6UL	10MAGLOCK6UL
10MAGLOCK1UL	10MAGLOCK1UL
10MAGLOCK5UL	10MAGLOCK5UL

- The external LED's function the same.
- The "UL" Maglocks incorporate a re-lock timer potentiometer whereas the non UL maglocks did not.
- The 10MAGLOCK1UL, 10MAGLOCK3UL, 10MAGLOCK5UL, 10MAGLOCK6UL incorporate a spring-loaded button in the armature plate to assist the release whereas the non-UL maglocks utilized a rubber bumper on top of the sex bolt.

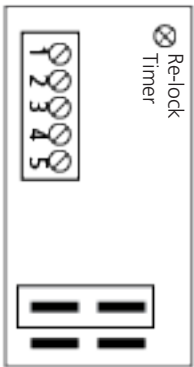
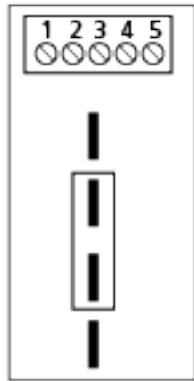
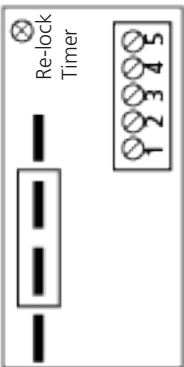
(Continued on next page)

APPLICATION NOTE

APP NOTE



Maglock Terminal Board Comparison Examples (Default 24VDC jumper setting shown)

<p>10MAGLOCK1UL 10MAGLOCK5UL</p> 	<p>10MAGLOCK1 10MAGLOCK3 10MAGLOCK5 10MAGLOCK6</p> 
<p>10MAGLOCK3UL 10MAGLOCK6UL</p> 	<p><u>Note:</u> the MAGLOCK5UL and 10MAGLOCK6UL are for a pair of doors and therefore utilize two terminal boards. Ensure to set the jumpers the same for each board. The examples to the right are not to scale and for illustration purposes with the orientation as viewed for a LH door leaf.</p>

Please contact BEA Inc. Customer Service for additional account information at 800-523-2462

Please contact BEA Inc. Technical Service for installation and troubleshooting at 800-407-4545