



# BEAMBOX

ACTIVE INFRARED MOTION & PRESENCE SENSOR

## LEARN MORE



click or scan

## TECHNOLOGY



### DESCRIPTION

BEA's **BEAMBOX** is a universal sensor ideal for a variety of unique off-door applications.

The **BEAMBOX** provides motion and presence detection, utilizing 15 active infrared spots that can be programmed into nine uniquely shaped detection zones.

BEA's **BEAMBOX** is ideal when very specific detection patterns are required, but not readily available in off the shelf sensors.

These patterns are often necessary in trains, buses, turn stiles, back office retail and other unique areas.

The **BEAMBOX** provides a DRY contact relay that can be used to switch any peripheral device, such as a buzzer, light or video camera.



### Off Door Presence Detection

Three rows of five infrared spots ideal for unique off door applications

### Multiple Preset Detection Zones

Four infrared immunity modes and nine unique preset patterns are available



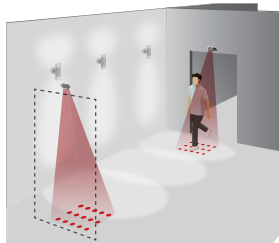
### Customizable To Your Application

Typical detection area of 3 ¼ x 3 ¼ feet when mounted at a height of 7 feet

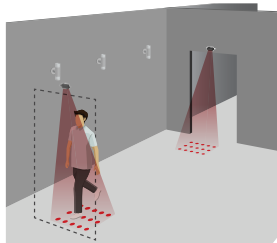
### Low Profile Design

Recessed mounting for low profile applications

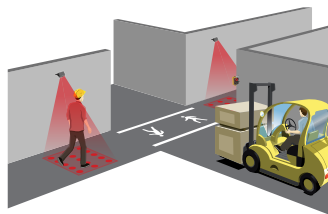
## APPLICATIONS



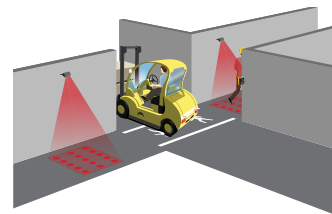
Light Activation



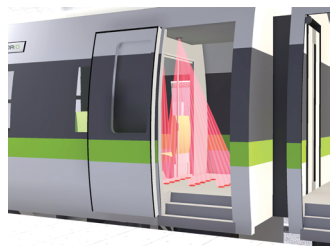
Light Deactivation



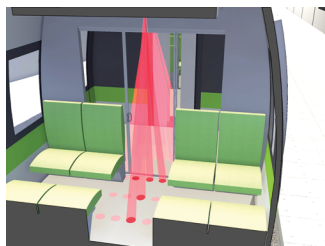
Signal Activation



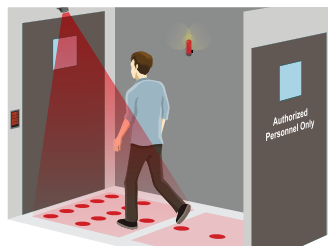
Signal Deactivation



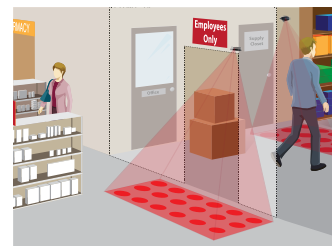
Entrance Detection



Passenger Aisle Safety



Buzzer / Alert



Back Office Retail

## TECHNICAL SPECIFICATIONS

<b>Technology</b>	Active infrared With Background Analysis
<b>Detection Mode</b>	Motion & Presence
<b>Optical Features</b>	15 independent IR spots with a diameter of typ. 0.43"
<b>Maximum Mounting Height</b>	8 1/2' (flush mounting)
<b>Tilt Angles</b>	0 – 20° vertical in steps of 5°
<b>Detection Zone</b>	3 3/10' (W) x 3 9/10' (D) @ mounting height 6 1/2'; tilt angle 20°
<b>Reaction Time</b>	< 100 ms
<b>Supply Voltage</b>	12 – 30 VAC ±10%; 12 – 45 VDC ±10%
<b>Power Consumption</b>	< 3 W (VA)
<b>Output</b>	Relay (free of potential change-over contact)
Max. Contact Voltage	42 VAC – 60 VDC
Max. Contact Current	1 A (resistive)
Max. Switching Power	30 W (DC) / 60 VA (AC)
<b>Monitoring Input</b>	Optocoupled (free of potential)
Input Voltage	10 – 24 VDC
Input Current	< 10 mA (@ 24 V)
<b>Connection (Sensor Side)</b>	Unpluggable integrated 7-pin connector
<b>Hold Time</b>	0.5 – 9 s (adjustable)
<b>LED Signal</b>	Red and Green
<b>Mains Frequency</b>	50 – 60 Hz
<b>Temperature Range</b>	-13 – 126 °F (operating); -22 – 140 °F (storage)
<b>Degree of Protection</b>	IP41
<b>Dimensions</b>	5 1/2" (W) x 1 1/2" (H) x 2 1/8"
<b>Weight</b>	3 1/2 oz
<b>Enclosure Material / Color</b>	Polycarbonate / Black
<b>Cable Length</b>	8'

## PRODUCT SERIES



**10BEAMBOX**  
Active infrared, motion  
and presence sensor



**10REMOTE**  
BEA universal remote  
control



**10SPOTFINDER**  
Infrared spotfinder

**DISCLAIMER** Information is supplied upon the condition that the persons receiving it will make their own determination as to its suitability for their purposes prior to use. In no event will BEA be responsible for damages of any nature whatsoever resulting from the use of or reliance upon information from this document or the products to which the information refers. BEA has the right without liability to change descriptions and specifications at any time.

[WWW.BEASENSORS.COM](http://WWW.BEASENSORS.COM)



[www.gateopenersafety.com](http://www.gateopenersafety.com) | 1(800)-878-7829 | [sales@gateopenersafety.com](mailto:sales@gateopenersafety.com)

A **Halma** company