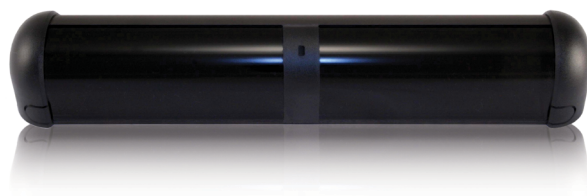




BODYGUARD-T

OVERHEAD PRESENCE SENSOR
FOR AUTOMATIC DOORS



LEARN MORE



click or scan

TECHNOLOGY



CERTIFICATIONS

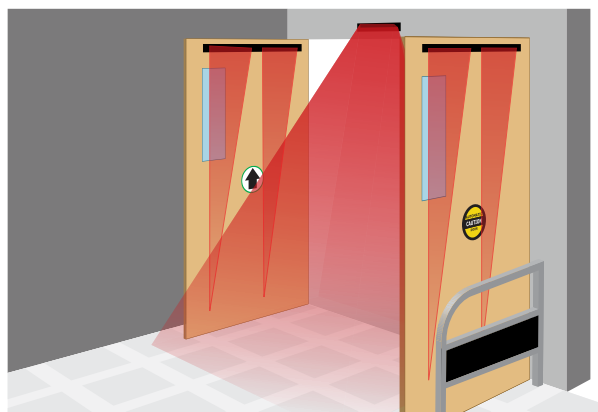


DESCRIPTION

BEA's **BODYGUARD-T** is an overhead presence sensor designed for pedestrian automatic doors.

The **BODYGUARD-T** provides threshold protection during the door open state. It is designed to prevent a closed door from opening and an open door from closing when a person is in the detection zone.

This sensor is easy to install and adjustments can be made by using the BEA remote control.



Overhead Presence Sensor

Versatile sensor can be used on single swing, simultaneous pair, dual egress and folding doors when coupled with an interface / lockout device

Tailor For Application Needs

Adjustable tilt angle from 0° – 10°

Customized Detection

Separate pattern width, depth and sensitivity for open and closed door states provide maximum flexibility

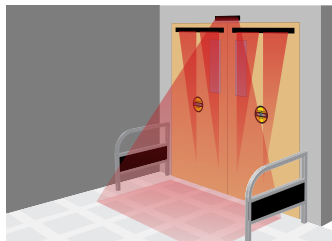
Standards Compliant

Fully monitored internally, capable of external monitoring

Visible Indication

Visible LED indicates connection between sensor and door control

APPLICATIONS



Double Swing



Single Swing

TECHNICAL SPECIFICATIONS

Technology	Active Infrared
Detection Mode	Presence
Installation Height (variable)	9' 0" maximum (recommended: 6' 6" – 8' 0")
Mounting Angles	
Bodyguard Only	5°, 10° (factory default setting: 5°)
With Bodymount	0°, 5°, 10°
Power Supply	12 – 24 VAC / VDC $\pm 10\%$
Frequency	50 – 60 Hz
Output	
Max. Contact Voltage	60 VDC / 125 VAC
Max. Contact Current	1 A
Max. Power Supply	30 W (DC), 60 VA (AC)
Relay Hold Time	0.5 – 9 s
Operating Temperature	-22 – 140 °F
Immunity	Immune to electrical and radio frequency interference
Cable	4'
Weight	1 lb 11 oz
Dimensions	12" (W) \times 2" (H) \times 2" (D)
Material	Aluminum & ABS plastic
Housing	Black anodized aluminum

PRODUCT SERIES



10BODYGUARDT
Overhead presence sensor



10BODYMNT
Spacer for BODYGUARD-T



10BGQD
Quick disconnect for BODYGUARD-T cable



10URC
Universal rain cover



10LO21
Lockout module



10REMOTE
BEA universal remote control

DISCLAIMER Information is supplied upon the condition that the persons receiving it will make their own determination as to its suitability for their purposes prior to use. In no event will BEA be responsible for damages of any nature whatsoever resulting from the use of or reliance upon information from this document or the products to which the information refers. BEA has the right without liability to change descriptions and specifications at any time.

WWW.BEASENSORS.COM



www.gateopenersafety.com | 1(800)-878-7829 | sales@gateopenersafety.com

A **Halma** company