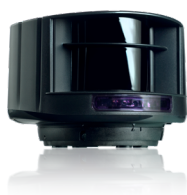




# LASER SCANNER

## COMPARISON



**LZR-H100**

LASER scanner for gate and barrier applications



**LZR-I30**

LASER scanner for industrial automation



**LZR-S600**

LASER scanner for building automation and security



**LZR-FLATSCAN S**

Compact, single-curtain, laser scanner for door, gate, and barrier applications

### PRIMARY APPLICATIONS

Gate & Barrier Presence Detection, Pedestrian Presence Detection, Gate & Barrier Activation

Automatic Industrial Door Presence Detection, Virtual Push Plate Activation, Gate & Barrier Presence Detection

Security Perimeter Detection, Warning Indication Light System, Large Industrial Door & Gate Activation, Platform Screen Door Activation, Track Monitoring

Automatic Industrial Door Activation, Gate & Barrier Presence Detection, Pedestrian Presence Detection, Gate & Barrier Activation

### TECHNICAL SPECIFICATIONS

Detection Mode	Motion and Presence	Presence	Presence	Presence
Mounting Position	Horizontal (left or right corner)	Vertical (left or right corner)	Horizontal or Vertical (left or right corner)	Horizontal or Vertical (left or right corner)
Mounting Height	Recommended at 40 cm (15 ¾")	Max. height of 30'	Max. height of 82'	Max. height of 18'
Max. Detection Range	9.6 m x 9.6 m (32' x 32')	360" x 360" (30' x 30')	984" x 984" (82' x 82')	18' x 18' (13 ½' @ 5% reflectivity)
Detection Field	4 curtains per sensor	4 curtains per sensor, curtain spread dependent on mounting height	4 curtains per sensor, curtain spread dependent on mounting height	1 curtain per sensor
Tilt Angle on Bracket	-3 – 3°	-3 – 3°	-3 – 3°	
Temperature Range	-22 – 140 °F (-30 – 60 °C) if powered 14 – 140 °F (-25 – 60 °C) if unpowered	-22 – 140 °F (-30 – 60 °C) if powered 14 – 140 °F (-25 – 60 °C) if unpowered	-22 – 140 °F (-30 – 60 °C) if powered 14 – 140 °F (-25 – 60 °C) if unpowered	-22 – 140 °F (-30 – 60 °C) if powered
Supply Voltage	10 – 35 VDC at sensor side	10 – 35 VDC at sensor side	10 – 35 VDC at sensor side	12 – 24 VDC ±15%
Degree of Protection	NEMA 4 / IP65	NEMA 4 / IP65	NEMA 4 / IP65	IP66

# LASER SCANNER COMPARISON



**LZR-H100**

LASER scanner for gate and barrier applications



**LZR-I30**

LASER scanner for industrial automation



**LZR-S600**

LASER scanner for building automation and security



**LZR-FLATSCAN S**

Compact, single-curtain, laser scanner for door, gate, and barrier applications

## TECHNICAL SPECIFICATIONS (cont.)

Output	2 electronic relays (galvanic-isolated – polarity-free) 35 VDC / 24 VAC 80 mA (resistive)	2 electronic relays (galvanic isolated - polarity free) 35 VDC / 24 VAC 80 mA (resistive)	2 electronic relays (galvanic isolated - polarity free) 35 VDC / 24 VAC 80 mA (resistive)	1 opto (galvanic isolation - polarity free) 42 VAC/VDC 100mA 1 relay (free of polarity contact) 42 VAC/VDC 1A (resistive) 30W DC / 60 VAC

## FUNCTIONALITY

Max. Presence Time, Detection Trajectory, Detection Delay, Safety Field Redirection, Output Configuration, Immunity, Magic Wand	Uncovered Zone, Immunity Filter, Min. Object Size, Output Activation Delay, Detection Field Redirection, Output Configuration	Uncovered Zone, Immunity Filter, Min. Object Size, Output Activation Delay, Detection Field Redirection, Output Configuration	Uncovered Zone, Immunity Filter, Min. Object Size, Fog Filter, Antimasking & Background, Output Redirection
---	--	--	--

## USER INTERFACE

Universal Remote Control	Universal Remote Control	Universal Remote Control	Universal Remote Control
--------------------------	--------------------------	--------------------------	--------------------------



IT'S ALL AROUND US  
**LASER TECHNOLOGY**