

4. Press and release the same remote button and the status LED will blink red and the opener will activate.

### Replacing the Battery

Replacing the battery will not affect the programming of the remote.

1. Take note of the battery cable and battery position before removing. New battery must be installed in the same position
2. Remove the battery cover and unclip the battery from the connector.
3. Clip a new 9V battery to the connector.
4. Place the battery in the cradle and press down. After seating the battery, reapply the cover.

### Erase All Remotes from your Garage Opener

**Intellicode 1 Type:** Press and hold the LEARN button on the garage door opener. After 6 seconds the light above the button will turn off. Once the light is turned off your opener will be cleared of all previous remote connections.

**Intellicode 2 Type:** Press and hold the Program/Set button until the round LED turns blue, then release. Press and hold the Up (+) and Down (-) buttons at the same time, until both LED turn blue and flashing and then turn off. The opener is now cleared of all remotes.

### Warranty

All Digi-Code door related products carry an eighteen (18) month warranty against defects in workmanship or material. This warranty begins on the date of manufacture, for eighteen months. Digi-Code warrantees our product only to our authorized dealers and distributors, and not to the end customer. If you have any questions about our warranty, please ask your dealer to determine the nature and scope of their warranty. Digi-Code does not assume, and is not responsible for, any real or consequential damages from claims against the performance of our product, nor is it liable for any costs related to the loss of life, property, or revenue. Further, Digi-Code is in no way responsible for the installation of our product and will assume no cost related to reinstallation or removal. Digi-Code’s warranty is in lieu of all other warrantees, expressed, or implied.

**CAUTION:** Any changes or modifications in intentional or unintentional radiators which are not expressly approved by Digi-Code USA Inc. could void the user’s authority to operate this equipment. This applies to intentional and unintentional radiators certified per part 15 of the FCC rules and regulations.

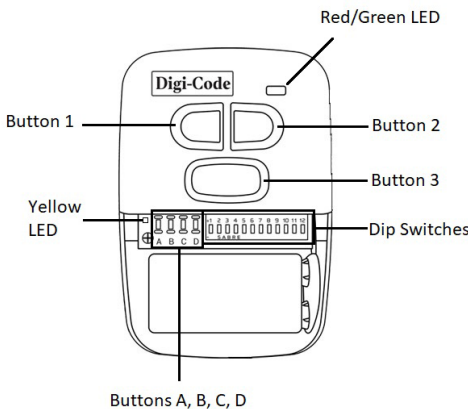
## DC-GN3 Genie Replacement Garage Door Remote

### Section 1

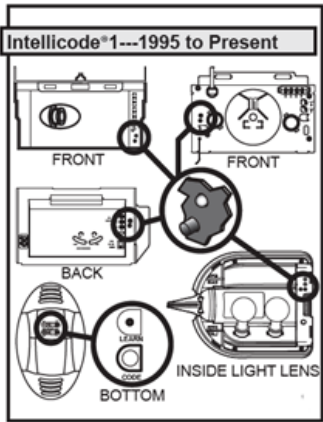
### Determine the Model of Your Genie Opener

Use the images below to determine which type of Genie garage opener you have.

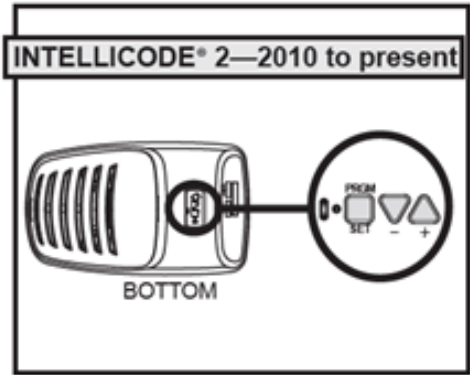
#### DC-GN3 Labeled Diagram



#### Intellicode 1 1995-Present – Go to Section 2

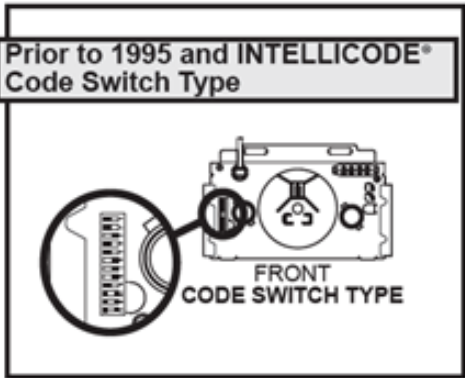


#### Intellicode 2 2010-Present – Go to Section 3



#### Pre-1995 and 9 & 12 Code Switch

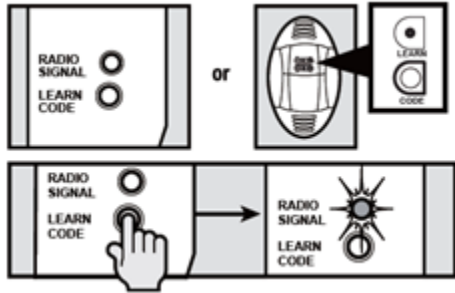
- Go to Section 4 for 9 Dip Switch Trinary
- Go to Section 5 for 12 Dip Switch Binary
- Go to Section 6 for 9 Dip Switch Binary



## Section 2

### Program Intellicode 1 Openers from 1995-Present

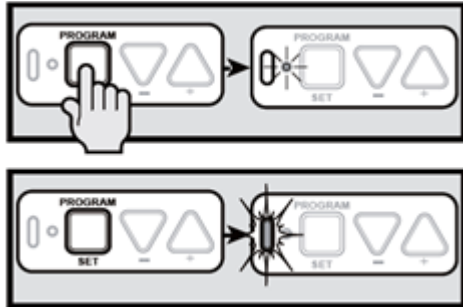
1. **With the garage door closed**, find the **Learn Code button** and **Learn Code indicator LED** on the opener.
2. Press the **Learn Code button** and the **Learn Code indicator LED** will blink rapidly.
3. Open the bottom cover of your DC-GN3 remote and **press the A button**. The **yellow status light** on your remote will flash rapidly.
4. While the **yellow status light** is flashing, **press and release** the button on the remote you want to control your opener. The **LED on the remote will flash green** and the learning **Learn Code indicator LED** will stop flashing and stay illuminated.
5. **Press and release the same button** on the remote again. The **LED on the remote will turn red** and the **Learn Code indicator LED will turn off**.
6. Press and release the same button on the remote one final time and the garage door should open.



## Section 3

### Program Intellicode 2 Openers from 2005-Present

1. To program your DC-GN3 remote, **open the bottom cover and press the A button**. The yellow status light on your remote will flash rapidly.
2. While the **yellow status light** is flashing, **press and release** the button on the remote you want to control your opener. The LED on the remote will flash green for a couple seconds.
3. **Press and hold** the same remote button until the LED changes from **red to green**.
4. **While the LED is green**, quickly **press the same remote button twice**. The LED will flash red two times.
5. To confirm the programming, **press the same remote button one more time**. The **LED will illuminate green** and then turn off.
6. **To program your opener, begin with the garage door closed**. Locate the **Program/Set button** on the opener and **press and hold for 2 seconds or until the round LED turns blue**. When the button is released the **blue LED will turn off and the openers long LED will turn purple**.



7. On the **remote**, **press and release the button** you programmed. The LED on the opener will turn off.
8. Press and release the same button on the remote one final time and the garage door should open.

## Section 4

### Program 9 Dip Switch 3 Position (Trinary, +/-/-)

1. **Open the opener lens light cover or radio receiver** to access the dip switches.
2. Open the **bottom cover of the DC-GN3** and set the **remote dip switches to match** those found in the opener or receiver. Set **switches 10, 11, and 12** to the **center position**.
3. Inside the **DC-GN3**, **press the B button**. While the **yellow status light is flashing**, **press and release** the remote button you want to control your opener. The **status LED on the remote will blink green**.
4. Press and release the same remote button and the status LED will blink red and the opener will activate.

## Section 5

### Program 12 Dip Switch 2 Position (Binary +/-/-)

1. Open the **opener lens light cover or radio receiver** to access the dip switches.
2. Open the **bottom cover of the DC-GN3** and set the **remote dip switches to match** those found in the **opener or receiver**. *Ensure none of the dip switches are set to the middle position.*
3. Inside the **DC-GN3**, **press the C button**. While the **yellow status light is flashing**, **press and release** the remote button you want to control your opener. The **status LED on the remote will blink green**.
4. Press and release the same remote button and the status LED will blink red and the opener will activate.

## Section 6

### Program 9 Dip switch 2 Position (Binary +/-/-)

1. Open the **opener lens light cover or radio receiver** to access the dip switches.
2. Open the **bottom cover of the DC-GN3** and set the **remote dip switches to match** those found in the **opener or receiver**. Set **switches 10, 11, and 12** to the **center position**. *Ensure none of the dip switches 1 thru 9 are set to the middle position.*
3. Inside the **DC-GN3**, **press the D button**. While the **yellow status light is flashing**, **press and release** the remote button you want to control your opener. The **status LED on the remote will blink green**.