



# 1KXL-O

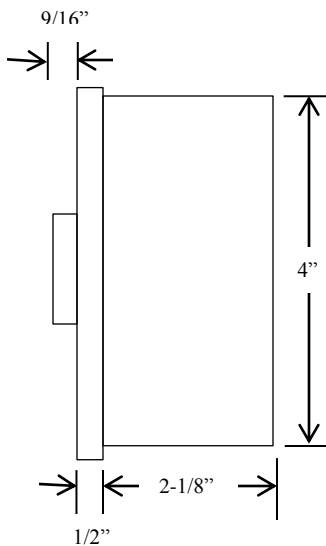
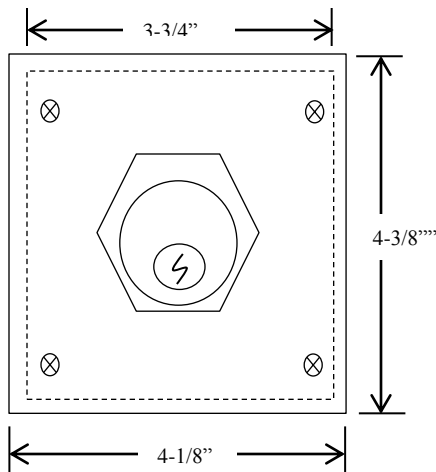
## KEYED CONTROL

- NEMA 3R, 4, 12
- SURFACE MOUNT
- TWO POSITION (HOLD OPEN-CLOSE)
- ALUMINUM DIE CAST ENCLOSURE
- CYLINDER: MORTISE TYPE (5 PIN)
- KEYSWITCH: 20 amp @ 125VAC
- KEYSWITCH: 15 amp @ 250VAC

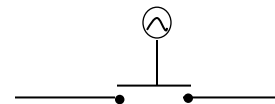
HOLD OPEN-CLOSE Keyswitch where power is activated when key turned to HOLD OPEN position and deactivated when key turned to CLOSE position.

AVAILABLE WITH BEST CORE CYLINDER OR EQUIVALENT, SLF TYPE LARGE FORMAT EQUIVALENT, CC (CHANGEABLE CYLINDER) VERSION

## DIMENSIONS



## WIRING



SHOWN IN "CLOSE" POSITION



Part of the DF Supply, Inc. family  
[www.gateopenersafety.com](http://www.gateopenersafety.com)

(888) 378-1043

[sales@GateOpenerSafety.com](mailto:sales@GateOpenerSafety.com)