

1KXL

KEYED CONTROL

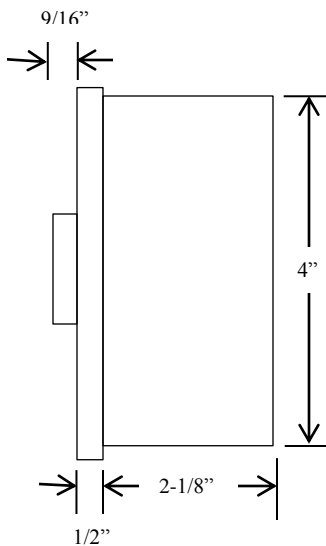
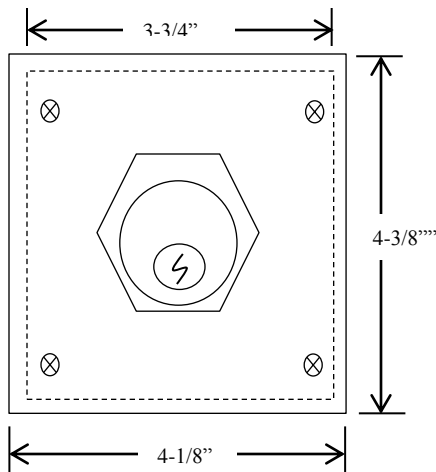


- NEMA 3R, 4, 12
- SURFACE MOUNT
- TWO POSITION (ON-OFF)
- ALUMINUM DIE CAST ENCLOSURE
- CYLINDER: MORTISE TYPE (5 PIN)
- KEYSWITCH: 20 amp @ 125VAC
- KEYSWITCH: 15 amp @ 250VAC

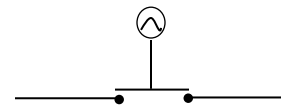
ON-OFF Keyswitch where power is activated when key turned to ON position and deactivated when key turned to OFF position.

AVAILABLE WITH BEST CORE CYLINDER OR EQUIVALENT, SLF TYPE LARGE FORMAT EQUIVALENT, CC (CHANGEABLE CYLINDER) VERSION

DIMENSIONS



WIRING



SHOWN IN "OFF" POSITION



Part of the DF Supply, Inc. family
www.gateopenersafety.com

(888) 378-1043

sales@GateOpenerSafety.com