

SUPERLOCK CODE | RAPIDRESET SINGLE SIDED KEYPAD

SPECIFICATION
SHEET

BDGSRR



BDGSRR right hand version shown

PRODUCT DETAILS

The RapidReset code lock mean you can change the code swiftly and easily without removing the lock from the gate. This single-sided version is equipped with a combination keypad on one side and lever-handle on the other. There is also a hold-function that when activated holds the gate in the open position and an anti-climb handle to prevent intruders using the handle as a foot hold to climb the gate.

Product code:	Description:
BDGSRR1030L	To fit 10-30mm (½" - 1 ¼") gate frames, left hand
BDGSRR1030R	To fit 10-30mm (½" - 1 ¼") gate frames, right hand
BDGSRR4060L	To fit 40-60mm (1 ½" - 2 ¼") gate frames, left hand
BDGSRR4060R	To fit 40-60mm (1 ½" - 2 ¼") gate frames, right hand

WHAT IS INCLUDED IN THE BOX:



Lock (Back)



Keypad (Front)



Lever handles



Face plate



Bolts



Hex Key



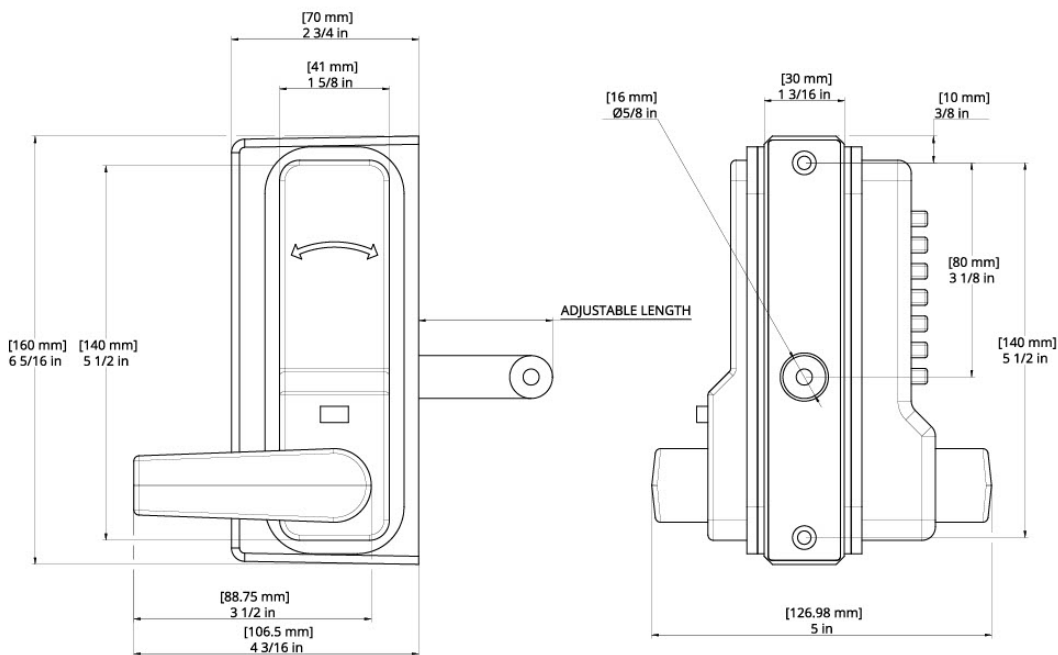
Latch bolt

SUPERLOCK CODE | RAPIDRESET SINGLE SIDED KEYPAD

SPECIFICATION
SHEET
BDGSRR

INSTALLATION

1. Drill 2 x 9mm (3/8") holes at 140mm (5 1/2") centres for fixing bolts provided.
2. Drill a 18mm (3/4") clearance hole for the latchbolt at 60mm (2 3/8") centres up from the bottom fixing hole.
3. Fix the handles to the square spindles so that the handles are facing away from the latchbolt and secure using the hex key supplied.
4. Hold the lock against the back of the box section and screw on the latchbolt through the larger hole.
5. Lock the latchbolt with the hex key supplied by inserting the hex key into the end of the latchbolt.
6. Fix lock in place using the stainless steel bolt support plate and the countersunk screws provided. Ensure the latchbolt moves freely.
7. Fix strike plate by either welding or screw fixing onto the gate post
8. **MAINTENANCE** Every 6 months, lubricate the latchbolt with light oil. Annually, dismantle the lock and spray mechanism with light oil.
9. If you have any problems with the latch bolt sticking, drill out the latch bolt hole as this should alleviate the issue.



COMPATIBLE PRODUCTS



**Superlock Secure Keep
(BSK)**



**Superlock Interlocking Keep
(BSKS)**



**Superlock Gapless Keep
(BSKG)**

SUPERLOCK CODE | RAPIDRESET SINGLE SIDED KEYPAD

SPECIFICATION
SHEET
BDGSRR

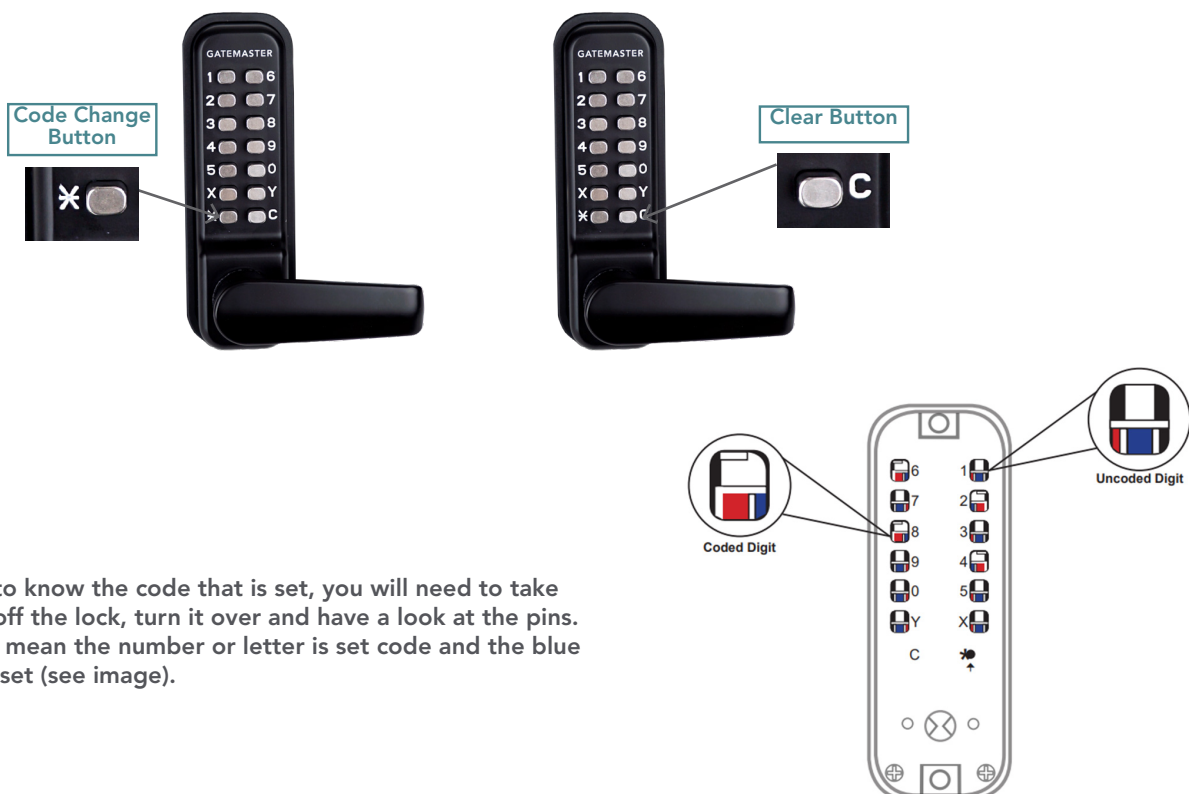
LOCK CODE:

C _ _ _ _ _

TO CHANGE THE CODE

To change the code you will need to know what the keypad is currently set to.

1. Enter existing code.
2. Fully press and hold the code change button (*) (until step 5)
3. Press 'C' button to clear the existing code. There is now no code set and the lock will operate as if the hold function is set until a new code is inputted.
4. Press the digits that are to be in the new code, making sure the code change button is still held down. Once the new code has been entered, press all the digits in the code once again to ensure that all the digits in the code are set.
5. Release the code change button (*).
6. Press 'C' button or rotate the lever handle to set the new code.
7. The new code is now set and ready for use.
8. Check that the code is working and that it is withdrawing the latch/deadbolt before closing the gate.



If you need to know the code that is set, you will need to take the keypad off the lock, turn it over and have a look at the pins. The red pins mean the number or letter is set code and the blue pins are not set (see image).