

SURFACE FIXED SUPERLOCK SINGLE-SIDED | RAPIDRESET

SPECIFICATION
SHEET

BDGSWRR



PRODUCT DETAILS:

Surface mounted digital code lock with RapidReset - change the code in seconds without removing from the gate. Single sided version with keypad on one side and lever handle with hold function button on the other. No power or battery needed, suitable for wooden gates. Marine grade keypads ensure long lasting durability.

Product code:	Description:
BDGSWRRL	Left handed, keypad on one side, inward opening
BDGSWRRR	Right handed, keypad on one side, inward opening
BDGSWRRLO	Left handed, keypad on one side, outward opening
BDGSWRRRO	Right handed, keypad on one side, outward opening

Latchbolt: Adjustable, moves 20mm (3/4"). Auto-latching when gate closes.

WHAT IS INCLUDED IN THE BOX:

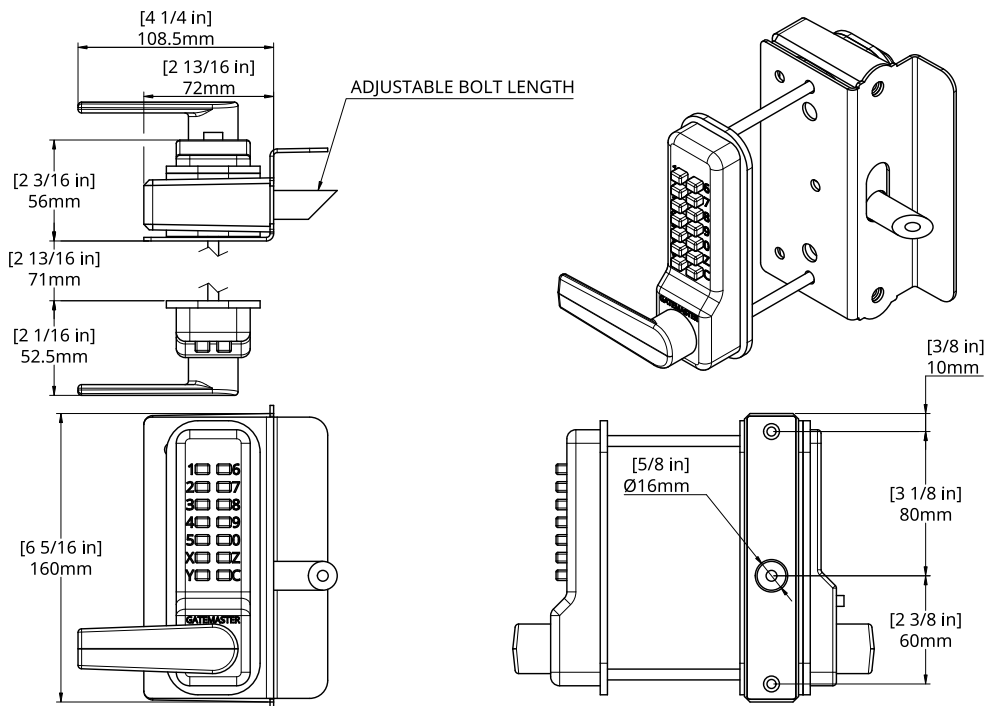


SURFACE FIXED SUPERLOCK SINGLE-SIDED | RAPIDRESET

SPECIFICATION
SHEET
BDGSWRR

INSTALLATION

1. Position Z bracket on edge of the gate (inside the gate for inward opening, outside for outward opening) and using the keep ensure there is a **minimum of 10mm clearance** between the 2 plates. Mark 3 holes for the outside keypad fixing screws (top and bottom central holes) and the spindle (directly above bottom central hole). Drill 2x 8mm ($\frac{1}{4}$ ") holes for the screws and a 12mm ($\frac{1}{2}$ ") hole for the spindle. Fix Z bracket to the gate using 3 screws supplied.
2. The keypad screws and spindles supplied are designed to fit standard gate thicknesses of 45mm and 75mm. (Note that a separate kit, BDGWE140, is used for gates above 75mm). For dimensions in between these, you may need to cut the parts to length. This can be done using a hacksaw or grinder. For the spindle, cut to gate thickness plus 90mm ($3 \frac{1}{2}$ ").
3. Fit the thread extenders to the separate keypad if required, then fix the keypad onto the gate with the M5 screws through the Z bracket. Insert spindle and ensure it can move freely within the gate. If it cannot move freely you may need to enlarge the hole.
4. Position lock on to the spindle and fix to the angle bracket using the stainless steel cover plate and the 2 x M8 countersunk screws. Screw on locking bolt, this may be adjusted as per point 6.
5. Mark the keep position on the gate post and fix using 4 screws supplied. Test and adjust accordingly.
6. **ADJUSTMENT** To adjust latchbolt length rotate the bolt as required for length and orientation, then insert 3mm long arm hex key (supplied) into end of bolt and turn clockwise to lock in place.



MAINTENANCE

6 monthly:

1. Remove keypads from the lock.
2. Spray the inside of the lock thoroughly with WD40 or equivalent, through the tumbler holes at the back of the lock.
3. Spray all the fixing accessories and the latch with WD40 or equivalent.
4. Push each of the buttons and rotate the knob several times to make sure the lock is working smoothly.

SURFACE FIXED SUPERLOCK SINGLE-SIDED | RAPIDRESET

SPECIFICATION
SHEET
BDGSWRR

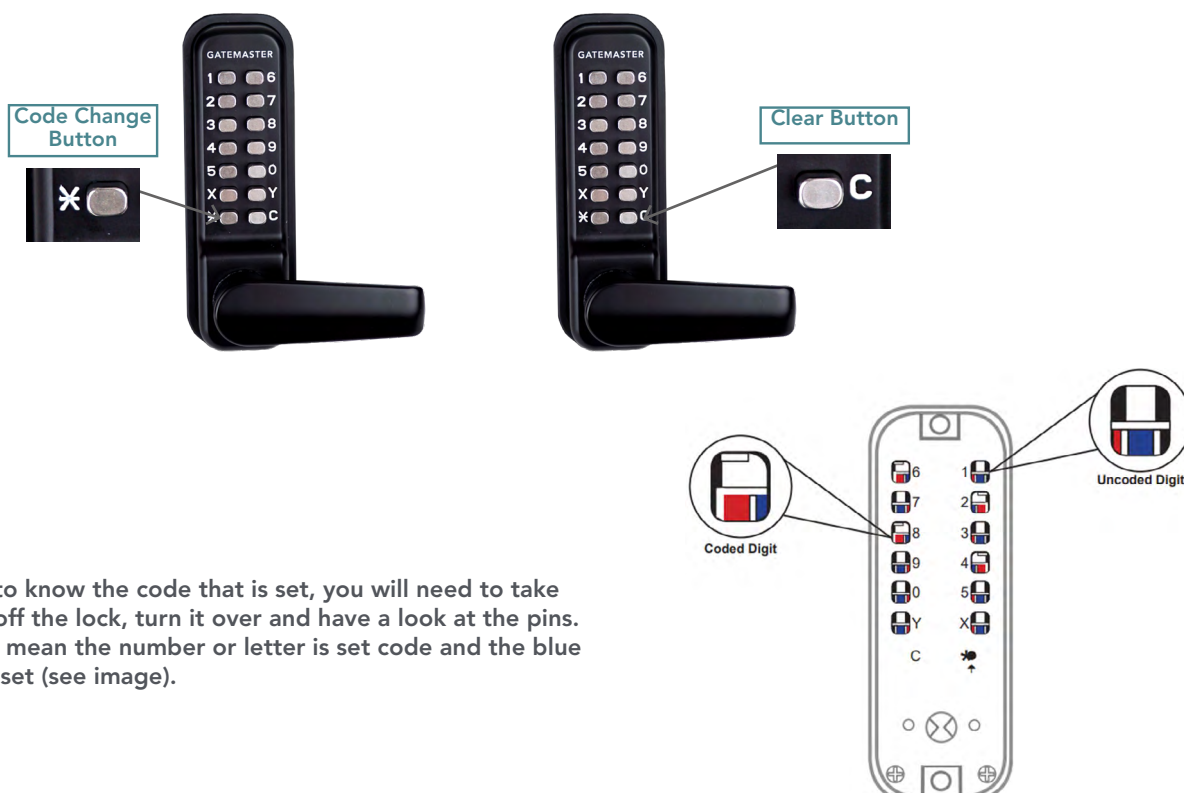
LOCK CODE:

C

TO CHANGE THE CODE

To change the code you will need to know what the keypad is currently set to.

1. Enter existing code.
2. Fully press and hold the code change button (*) (until step 5)
3. Press 'C' button to clear the existing code.
4. Press the digits that are to be in the new code. Once the new code has been entered, press all the digits in the code once again to ensure that all the digits in the code are set.
5. Release the code change button (*).
6. Press 'C' button or rotate the lever handle to set the new code.
7. The new code is now set and ready for use.
8. Check that the code is working and that it is withdrawing the latch/deadbolt before closing the door/gate.



If you need to know the code that is set, you will need to take the keypad off the lock, turn it over and have a look at the pins. The red pins mean the number or letter is set code and the blue pins are not set (see image).