

# SURFACE FIXED SUPERLOCK DOUBLE-SIDED | RAPIDRESET

SPECIFICATION  
SHEET

BDGWRR



## PRODUCT DETAILS:

Surface mounted digital code lock with RapidReset - change the code in seconds without removing from the gate. Double sided version with keypads on both sides of the gate. No power or battery needed, suitable for wooden gates. Marine grade keypads ensure long lasting durability.

Product code:	Description:
BDGWLRR	Left handed, keypad on both sides, inward opening
BDGWRRR	Right handed, keypad on both sides, inward opening
BDGWLORR	Left handed, keypad on both sides, outward opening
BDGWR ORR	Right handed, keypad on both sides, outward opening

Latchbolt: Adjustable, moves 20mm (3/4"). Auto-latching when gate closes.

## WHAT IS INCLUDED IN THE BOX:



# SURFACE FIXED SUPERLOCK DOUBLE-SIDED RAPIDRESET

SPECIFICATION  
SHEET  
**BDGWRR**

## INSTALLATION

1. Position Z bracket at a suitable height on the outside of the gate and mark it for reference. Start off the holes with a smaller frill bit, using the plate as a jig.
2. Drill the holes partway through, then mark and drill from the other side to ensure holes are straight.



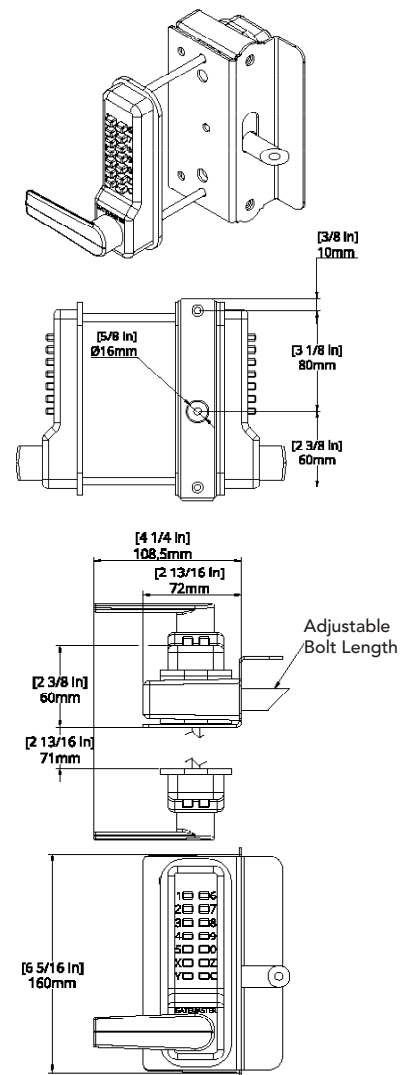
3. Drill the centre spindle hole with a 12mm drill bit, and open out the top and bottom holes with the 12mm drill bit to allow insertion of the outside keypad. Insert outside keypad and fasten with M5 screws provided. M5 screws may have to be cut to length (gate thickness 20mm) with a grinder or a hacksaw. Screw Z bracket to the gate with screws supplied. Insert spindle and measure to 48mm, then cut to length using grinder or hacksaw.



4. Once cut, insert the spindle, then place lock body over spindle and fix using M8 fixing bolts and cover plate supplied. Use 5mm hex key to tighten bolts.



5. To fit the keep, align with the lock and mark the position on the gate post, then fasten with screws supplied.
6. To adjust the length and orientation of the latch, twist clockwise to shorten or anti-clockwise to lengthen and lock in position with the 3mm hex key supplied.



## MAINTENANCE

6 monthly:

1. Remove keypads from the lock.
2. Spray the inside of the lock thoroughly with WD40 or equivalent, through the tumbler holes at the back of the lock.
3. Spray all the fixing accessories and the latch with WD40 or equivalent.
4. Push each of the buttons and rotate the knob several times to make sure the lock is working smoothly.

# SURFACE FIXED SUPERLOCK DOUBLE-SIDED RAPIDRESET

SPECIFICATION  
SHEET  
**BDGWRR**

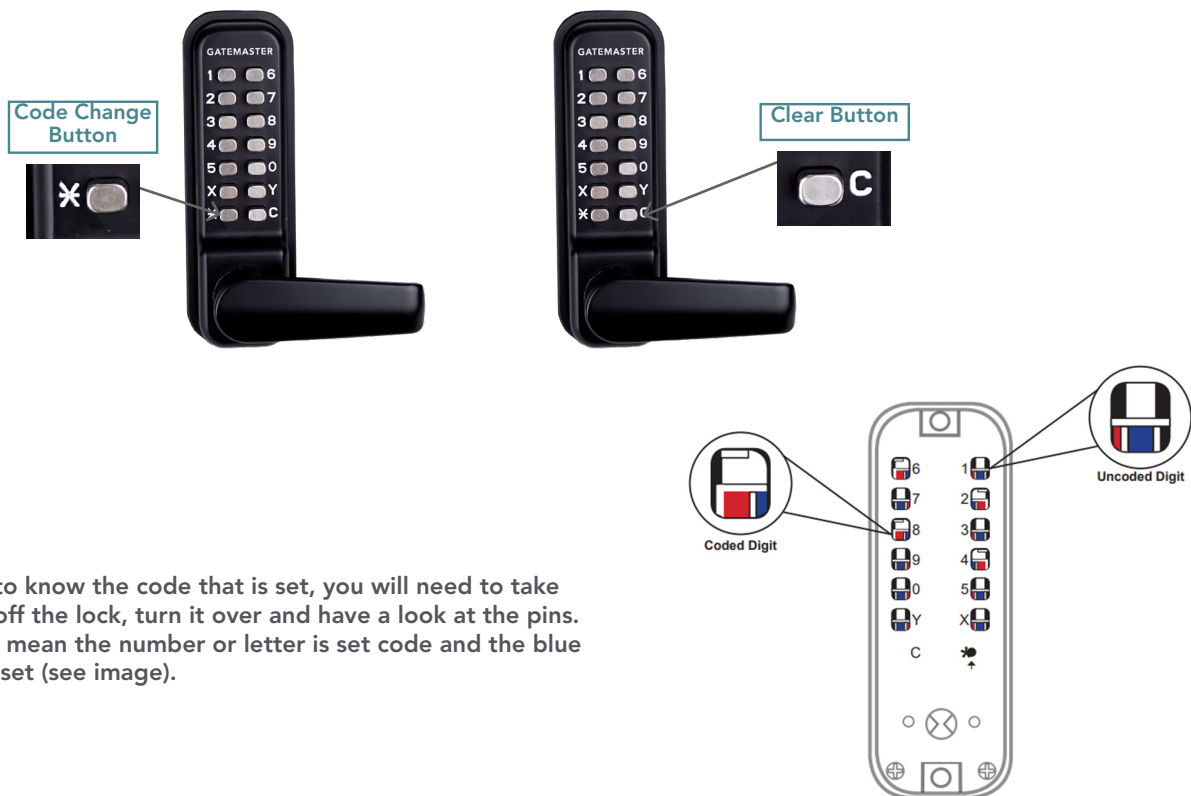
## LOCK CODE:

C \_\_\_\_\_

## TO CHANGE THE CODE

To change the code you will need to know what the keypad is currently set to.

1. Enter existing code.
2. Fully press and hold the code change button (\*) (until step 5)
3. Press 'C' button to clear the existing code.
4. Press the digits that are to be in the new code. Once the new code has been entered, press all the digits in the code once again to ensure that all the digits in the code are set.
5. Release the code change button (\*).
6. Press 'C' button or rotate the lever handle to set the new code.
7. The new code is now set and ready for use.
8. Check that the code is working and that it is withdrawing the latch/deadbolt before closing the door/gate.



If you need to know the code that is set, you will need to take the keypad off the lock, turn it over and have a look at the pins. The red pins mean the number or letter is set code and the blue pins are not set (see image).