



## Instruction Manual

The ETM-17 is a panel mount digital timer that can be operated in 12 VDC or 24 VDC/AC power supply ranges depending on model. The timer has an internal battery for memory backup in the event of a power failure. The ETM-17 is designed with 17 ON/OFF events per day and 15 combinations of daily programs for the best flexibility to the user.

### Cautions and Warnings



This product is an accessory or part of a system. Install the ETM-17 according to instructions from the gate or door operator manufacturer. Comply with all applicable codes and safety regulations.

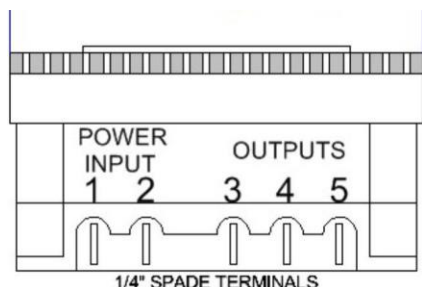
### Specifications

Power	12 VDC, 24 VDC/AC
Current Draw	10 mA standby, 30 mA activated
Relay Contact Rating	16 A @ 30 VDC
Relay	SPDT 16 A @ 30 VDC
Mounting	Screw mount
Dimensions (L x W x H)	2.4" (61 mm) x 2.4" (61 mm) x 1.2" (30.5 mm)

### Ordering Information

- ETM-17-12      12 VDC digital timer
- ETM-17-24      24 VDC/AC digital timer

### Wiring Connections



Terminal	Description
1	Power + (12 VDC or 24 VDC/AC)
2	Power - (12 VDC or 24 VDC/AC)
3	Relay Output Normally Closed
4	Relay Output Common
5	Relay Output Normally Open

## Installation

1. Mount the ETM-17 using the four holes provided and wire according to the wiring connections and operator instructions. The power terminals are not polarity sensitive.

2. Current date and time setup:

- To switch between standard and military time, hold down the CLOCK button until PM/AM appear for standard or disappear for military.
- While holding down the CLOCK button, repeatedly press the DAY/HOUR/MIN button to set the current day, hour and minute.

3. Program Setup:

- Press TIMER button. 1<sup>ON</sup> --:-- will appear on the screen.
- Press DAY button until the desired daily options appear on the screen. See the chart to the right for the DAY options.

**TIP:**

Each event ON and OFF (Ex: 1<sup>ON</sup> and 1<sup>OFF</sup>) must have daily program options that match.

- Press HOUR and MIN to set the desired time.
- Press TIMER button again 1<sup>OFF</sup> --:-- will appear on the screen.
- Press HOUR then MIN to set the desired time to turn event 1 OFF.
- Repeat the programming setup steps to set events 2-17 ON and OFF.
- Press CLOCK button to start programs
- Press MANUAL button to move the indicator line at the bottom of the screen to auto.


15 DAILY PROGRAM OPTIONS

	MO	TU	WE	TH	FR	SA	SU
1.	MO	TU	WE	TH	FR	SA	SU
2.	MO						
3.		TU					
4.			WE				
5.				TH			
6.					FR		
7.						SA	
8.							SU
9.	MO	TU	WE	TH	FR		
10.						SA	SU
11.	MO	TU	WE	TH	FR	SA	
12.	MO	TU	WE				
13.				TH	FR	SA	
14.	MO		WE		FR		
15.		TU		TH		SA	

MANUAL Indicator Line

<b>ON</b>	Timer function bypassed constant on
<b>AUTO</b>	Follows program
<b>OFF</b>	Timer function bypassed constant off

4. Optional programming:

- Sleep Mode:** Press down HOUR and MIN for 3 seconds while the screen displays the clock. The system will power down and the screen will go blank. To power back up, press  key. (Pressing this key will erase all programmed memory.)
- Countdown Function:** Press down CLOCK and TIMER for 3 seconds while the screen displays the clock. The screen will show d 00:00<sub>00</sub>. To set the countdown, hold CLOCK down and set the time with the HOUR and MIN buttons. To start the countdown, press MANUAL. To exit, press down CLOCK and TIMER for 3 seconds.

## Warranty

EMX Industries, Inc. products have a warranty against defects in materials and workmanship for a period of two years from date of sale to our customer.