

# IRB-RET2

## UNIVERSAL RETROREFLECTIVE PHOTOEYE KIT

Building on the success of the original IRB-RET, the IRB-RET2 takes a step further by offering advanced features in a smaller and more convenient package.

### Six UL325 Monitoring Methods

With six UL325 monitoring methods, the IRB-RET2 easily integrates with various systems for increased adaptability.

### Ball and Socket Bracket

The ball and socket bracket offers versatile positioning options for a seamless and secure setup.

### 1/2 Inch Conduit Connection

The 1/2 inch conduit connection ensures a reliable and sturdy link for a safe and dependable installation.

### Easy Alignment LED

Align the sensor with the help of the easy alignment LED, saving time and reducing frustration.

### Integrated Sensor Hood

The integrated sensor hood shields the device from the elements, ensuring reliable performance in all conditions.

### Selectable Stealth Mode

Stealth mode turns off LEDs after 30 seconds of inactivity, protecting your equipment from unwanted attention or vandalism.

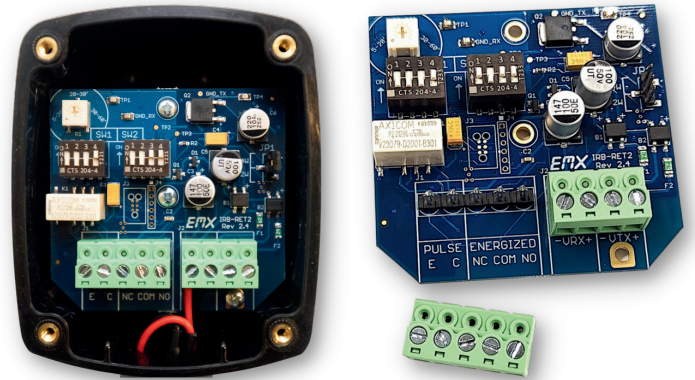
# IRB RET2



## MORE DETAILS

- **UL325 Monitoring Methods**
  - Normally Closed
  - 10K Resistive Termination
  - Two-wire Pulse (2 Frequency)
  - Two-wire Pulse (3 Frequency)
  - Four-wire Pulse (2 Frequency)
  - Four-wire Pulse (3 Frequency)
- **Type B1, Non-Contact Sensor**
- **Operating Range up to 60 ft. (18.3m)**
- **Sensitivity Adjustment: Potentiometer**

The IRB-RET2 has detachable screw terminals for easier wiring. Remove them while connecting wires, then plug them back in properly and secure them.



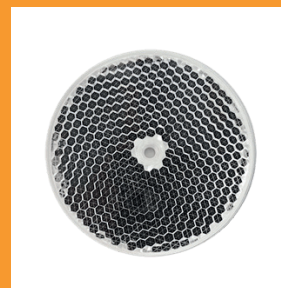
Integrated  
Sensor Hood



Ball & Socket  
Mounting Bracket



Reflector Extension  
Bracket



REFLECTOR-O-EX



REFLECTOR-O-HD

## TECHNICAL DATA

<b>Operating Range</b>	5 ft (1.5 m) to 60 ft (18.3 m)
<b>Sensitivity Adjustment</b>	Potentiometer
<b>Power</b>	6-40 VDC, 12-24 VAC
<b>Current (NC and 10K Monitoring Methods)</b>	50 mA DC (relay activated)
<b>Current (Pulse Monitoring Methods)</b>	15 mA DC
<b>Resistive Termination</b>	10K ohm across NO contact (switch selectable)
<b>Surge Protection</b>	Thermal fuse, MOV
<b>Relay Output Operation</b>	Light ON/Dark ON
<b>Response Time</b>	250ms
<b>Operating Temperature</b>	-30° to 140°F (-34° to 60°C)
<b>Environmental</b>	NEMA 4X
<b>Dimensions (L x W x H)</b>	5.1" (130 mm) x 3.15" (80 mm) x 5.5" (140 mm)
<b>Weight</b>	0.77 lbs.
<b>Ball Joint Mount Conduit Thread</b>	½ Inch NPT

WARRANTY EMX INC. the product described herein for a period of 2 years under normal use and service from the date of sale to our customer. The product will be free from defects in material and workmanship. This warranty does not cover ordinary wear and tear, abuse, misuse, overloading, altered products, or damage caused by the purchaser from incorrect connections, or lightning damage. There is no warranty of merchantability. There are no warranties expressed, implied or any affirmation of fact or representation which extend beyond the description set forth herein. EMX Inc. sole responsibility and liability, and purchaser's exclusive remedy shall be limited to the repair or replacement at EMX's option of a part or parts not so conforming to the warranty. In no event shall EMX Inc. be liable for damages of any nature, including incidental or consequential damages, including but, not limited to any damages resulting from non-conformity defect in material or workmanship. Rev 3 12/06/2022

