



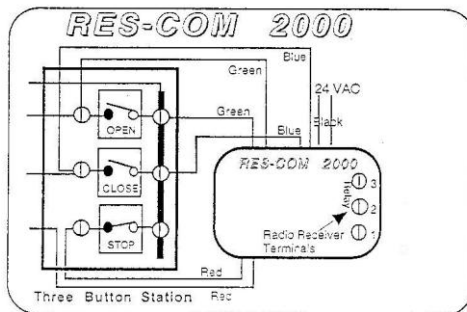
208 S Spreser St PO Box 376
Taylorville, IL 62568
800-7DOMINO 800-736-6466
217-824-9441(T) 217-824- 3349(F)
email: info@dominoengineering.com

Installation Instructions for Res-Com 2000

Nature of Operation: The *Res-Com 2000* (RC2K) is designed to adapt standard residential, single-button radio controls for use with traditional three button commercial operators. Open, stop, and close functions are performed by a single button transmitter. Each press activates the operator, one function at a time, in rotation: up...stop...down...stop, etc.

Installation: The *Res-Com 2000* can be positioned or mounted near a three-button station or the operator. The *Res-Com 2000* requires 24 VAC.

Wiring Res-Com 2000: The *Res-Com 2000* wires into the open, stop, and close circuits of the three button station (see diagram). Green wires connect to open and common of open circuit; blue wires connect to close and common of close circuit; and the red wires connect in series with the stop circuit (does **not** connect with common of stop). Each of the two black wires connect to a separate leg of the 24VAC which can be sourced from the 24 VAC transformer in the operator, or from a wall plug-in transformer.



Wiring Radio Receiver: Any 24 VAC receiver can be used with the *Res-Com 2000*. Connect the three receiver terminals to the three *Res-Com 2000* terminals. Terminal 2 on the *Res-Com 2000* is the relay or sense input terminal.

WARRANTY: Domino Engineering Corporation will repair or replace at no charge any *Res-Com 2000* failing to operate properly for any reason, except physical abuse or excessive voltage, within a period of 12 months from date of purchase. In addition, Domino Engineering Corporation will repair or replace for \$50 any *Res-Com 2000* failing to operate properly for any reason, except physical abuse or excessive voltage, within the period of one to five years from date of purchase.

Additional Controls. For increased safety and convenience in operating an electrically controlled commercial overhead door, a *Safety Reverse Converter* (SRC) is available. The SRC easily wires into the operator's circuit allowing the operator to accept a reversing edge or photo beam. When the SRC detects an obstruction, it stops, pauses, and reverses the door fully open. Contact your local distributor or Domino Engineering Corporation.