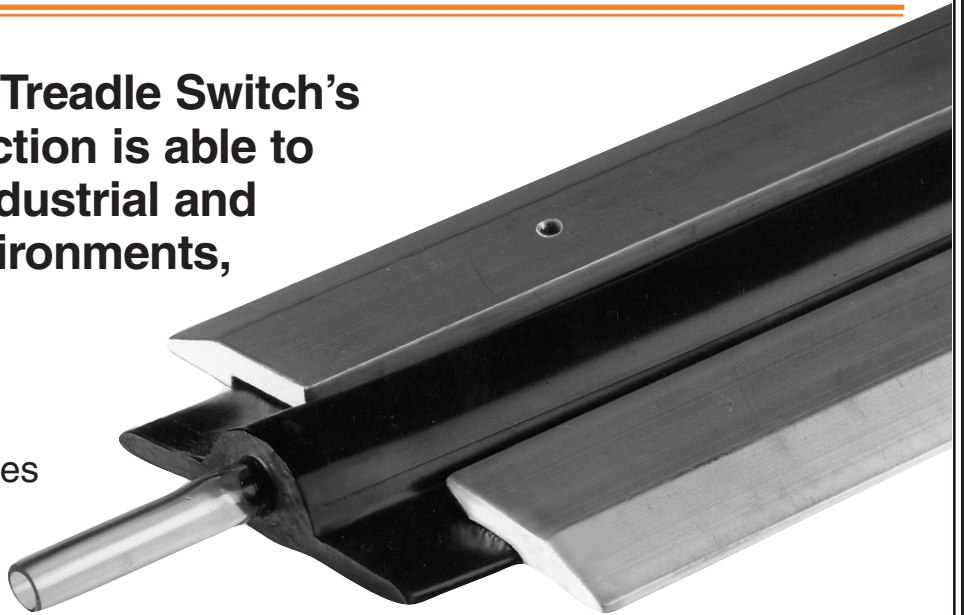


## **MEP190 Pneumatic Treadle Switch**

**The Miller Edge Treadle Switch's rugged construction is able to handle tough industrial and commercial environments, inside or out.**

### **FEATURES:**

- Stock & Custom Sizes
- All-weather PVC Construction
- Fast/Reliable Service
- 10' PVC Tubing Attached



### **Specifications**

Outer Materials: PVC

Color: Black

Standard Length: 2' to 10'

Dimensions: 3 3/4" x 3/4"

Sensitivity: 2.0 LB Force per UL-325  
(1 7/8" cylinder probe)

Operating Temperatures: -30° C to +70° C  
(-30° F to +158°F)

Expected Life: 1,000,000 activations

### **Warranty**

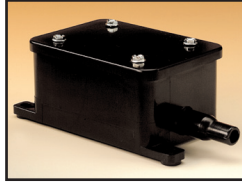
We will replace within 1 year from date of shipment from our factory any treadle switch subject to normal use which is found to have defective materials or workmanship, as determined solely by our authorized factory representative. Replacements will be shipped to you freight collect. This warranty is void where evidence of misuse or abuse is present.



REV. 8-23-04

## Accessories

### • PS20 Pneumatic Switch



Sensitivity: 1/3 oz. per sq. in.  
Max. Pressure: 20 PSI  
Elect. Conf: 3 wire SPDT  
Elect. Rating: 3A@125, 250  
277 VAC 1/10HP@250 VAC  
Enclosure Material: ABS NEMA 4

### • AW12 Air Wave Switch in NEMA 4x



AW10 Switch in water resistant enclosure  
Enclosure Material: Polystyrene  
Tubing: Silicone, 1 ft x 3/32" I.D.  
Air Connection: Barbed Coupler 3/32" I.D.

### • Rubber Hose



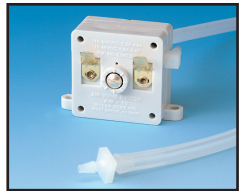
Air hose for use with PS20 or  
Air Wave switches.  
3/8" I.D.  
1/2" I.D.

### • AW14 Air Wave Switch in enclosure



AW10 Switch in molded enclosure  
Enclosure Material: ABS  
Tubing: Silicone, 1 ft x 3/32" I.D.  
Air Connection: Barbed Coupler 3/32" I.D.

### • AW10 Air Wave Switch Only



Electrical Conf: 2 wire, N.O. or N.C.  
Diaphragm: Silicone  
Electrical Life: 1 million operations  
minimum depending on  
contact load.  
Mech. Life: 2 million operations  
Adjustable sensitivity

### • Aluminum Retainer

### • PVC Tubing

REV. 8-23-04