

# REBEL™



Thru Beam Technology Designed for Door Industry

## Applications

- **Motorized Doors**

Miller Edge Rebel infrared thru beam photo optic system includes independently housed emitting and receiving units. Units are intended to be positioned to create an invisible light beam line to guard against entry into a potentially hazardous area. If an obstruction breaks the beam of light, a signal is sent to the motor controls to stop and/or reverse motion.

### OPTIONS:

- MIRF-S2: 30 ft max. range; fail-safe
- MIRF-S2-50: 50 ft max. range; fail-safe
- MIRM-S2: 30 ft max range; monitored 
- MIRM-S2-50: 50 ft max range; monitored 



Rebel Receiver



Rebel Emitter mounted on Optional Wall Mount Extension Kit

### FUNCTIONAL BENEFITS:

- Spans Distances up to 50 feet (model dependent)
- Time Saving Installation
- Vertical or Horizontal Mounting
- Easy Alignment with Positioning Indicators
- Monitored and Fail Safe Options to Meet Operator Inputs
- UL325 Compliant for Doors
- Easy to Stock
- Impact Resistant for Rugged Environments
- Enhanced Sun Guard Protection
- Built in Strain Relief Protects Cable

### SPECIFICATIONS:



Physical	
Dimensions	5"H x 2 3/4"L x 1 5/8"W
Weight	Emitter Receiver
	0.43lbs (Em) 0.49lbs (Rx)
Bracket Material	Steel/TPE
Mounting Method	Static: Wall, Floor or Post
Alignment Indicator	Yes - Visual LED

Mechanical	
Detection Technology	Infrared Thru-Beam
Wave Length	940nm
Response Time	<20msec
Alignment Angle	±10°
Operating Temp. Range	-40°F to +185°F -40°C to +85°C

## TECHNICAL SPECIFICATIONS:

	<b>MIRF-S2</b>	<b>MIRF-S2-50</b>	<b>MIRM-S2</b>	<b>MIRM-S2-50</b>
Max. Range	30 Ft. (9.1m)	50 Ft (15.2m)	30 Ft. (9.1m)	50 Ft (15.2m)
Indicators: LED	Em : Green - Power Rx : Green - Aligned : Red - Not Aligned	Em : Green - Power Rx : Green - Aligned : Red - Not Aligned	Em : Green - Power Rx : Green - Aligned : Red - Not Aligned	Em : Green - Power Rx : Green - Aligned : Red - Not Aligned
Certifications	N/A	N/A	UL325, UL991	UL325, UL991
<b>ELECTRICAL:</b>				
Power Supply	8-30 VAC/12-42 VDC	8-30 VAC/12-42 VDC	Monitored PE terminal	Monitored PE terminal
Current Consumption	Em & Rx Beam Aligned: 36mA@24VAC  Beam Blocked:15mA @24VAC	Em & Rx Beam Aligned: 36mA@24VAC  Beam Blocked:15mA @24VAC	N/A	N/A
IR Control Unit	NEMA4; 24VAC	NEMA4; 24VAC	N/A	N/A
Relay Rating	10A@120VAC/ 8A @ 30VDC	10A@120VAC/ 8A @ 30VDC	N/A	N/A
Cable Length	Em: 32 ft (9.7m) Rx: 3 ft (0.9m)	Em: 52 ft (15.8m) Rx: 3 ft (0.9m)	Em: 32 ft (9.7m) Rx: 3 ft (0.9m)	Em: 52 ft (15.8m) Rx: 3 ft (0.9m)
Ratings	NEMA4, Class2, IP65	NEMA4, Class2, IP65	NEMA4, Class2, IP65	NEMA4, Class2, IP65

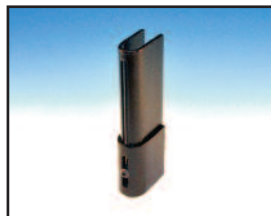
## CONTROL UNIT INDICATORS ON MIRF MODELS:

<b>LED COLOR</b>	<b>OK STATUS</b>	<b>FAULT</b>	<b>SOLUTION</b>
GREEN	FLASHING= NORMAL OPERATION	OFF= NO POWER or OBSTRUCTION	CHECK WIRING
RED	OFF = NORMAL OPERATION	ON = OBSTRUCTION	REMOVE OBSTRUCTION CHECK WIRING

### WARRANTY

We will replace within two years of shipment from our factory, any Rebel subject to normal use which is found to have defective materials or workmanship, as determined solely by our factory representative. Replacements will be shipped to you freight collect. This warranty is void where evidence of misuse or abuse is present.

### ACCESSORIES:



**MIR-S2-EK**  
Mounting Bracket Extension Kit



**JB-03-FLEX**  
Conduit kit with junction box

